

**D** **Messtextilien**

**Sprinklernetz**

Art. 1621-

**Sprinklernetz CS**

Art. 1622-

**Gittertüll CS**

Art. 1623-

**MEGASTRETCH 150**

Art. 1624-

**MEGASTRETCH 450**

Art. 1624-

**F** **Toiles expo**

**Filet sprinkler**

Réf. 1621-

**Filet sprinkler CS**

Réf. 1622-

**Filet maille carrée CS**

Réf. 1623-

**MEGASTRETCH 150**

Réf. 1624-

**MEGASTRETCH 450**

Art. 1624-

**E** **Expo textiles**

**Square net**

Art. 1621-

**Square net CS**

Art. 1622-

**Square gauze CS**

Art. 1623-

**MEGASTRETCH 150**

Art. 1624-

**MEGASTRETCH 450**

Art. 1624-

Bitte beachten:

In der Darstellung der Muster als PDF-Datei kann es technisch bedingt zu Farbabweichungen kommen.

Attention!

Photos non contractuelles.

Please note:

Photos of samples shown in pdf-file may vary slightly in colour due to technical reasons.



**Sprinklernetz 3 x 3 mm**

Reine Baumwolle.  
Stüklänge ca. 45 lfm.

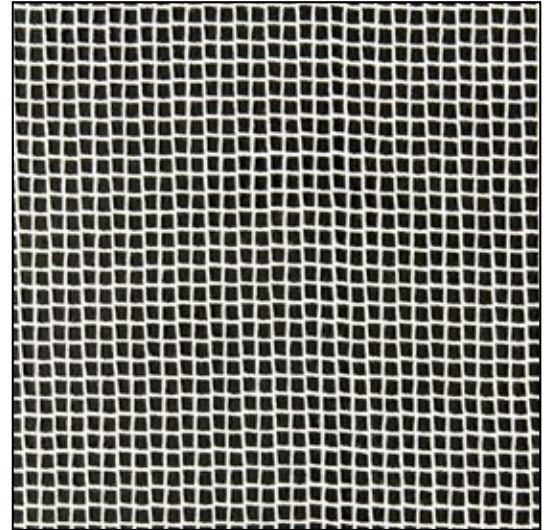
**Filet sprinkler 3 x 3 mm**

100 % coton.  
Longueur des pièces env. 45 ml.

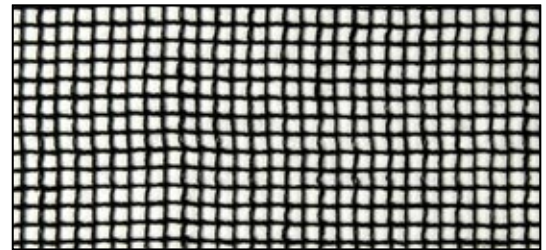
**Square net 1/8" x 1/8"**

100 % cotton.  
Piece length approx. 49.2 yds.

| Art. / Réf. | Farben  | Coloris | Colours | B1 | M1 | BS | ↔ cm | ft/in | ☐ g/m <sup>2</sup> | oz/yd <sup>2</sup> |
|-------------|---------|---------|---------|----|----|----|------|-------|--------------------|--------------------|
| 1621 0511   | weiss   | blanc   | white   | •  |    |    | 550  | 18'0" | 82                 | 2,42               |
| 1621 0521   | schwarz | noir    | black   | •  |    |    | 550  | 18'0" | 82                 | 2,42               |
| 1621 1111   | weiss   | blanc   | white   | •  |    |    | 1190 | 39'0" | 82                 | 2,42               |
| 1621 1121   | schwarz | noir    | black   | •  |    |    | 1190 | 39'0" | 82                 | 2,42               |



weiss / blanc / white



schwarz / noir / black

**Sprinklernetz CS 3 x 3 mm**

100 % Trevira CS.  
Permanent schwer entflammbar.  
Stüklänge ca. 45 lfm.

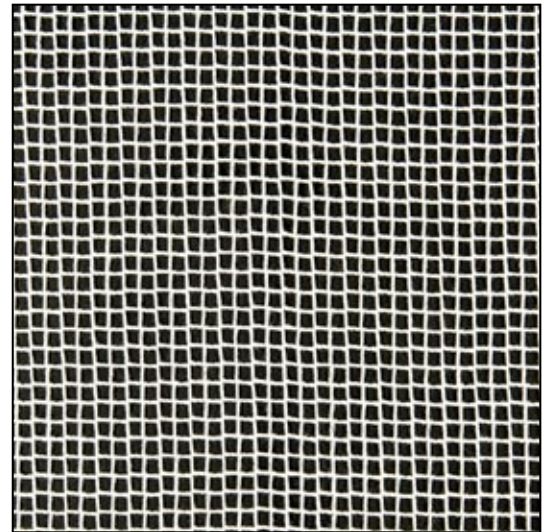
**Filet sprinkler CS 3 x 3 mm**

100 % trévira CS.  
Longueur des pièces env. 45 ml.

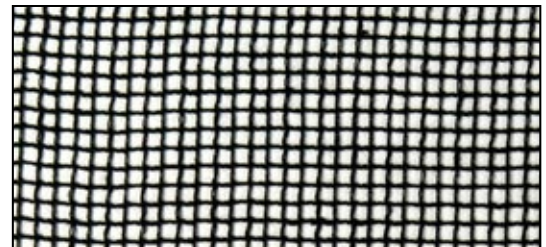
**Square net CS 1/8" x 1/8"**

100 % trevira CS.  
Inherently flameproofed.  
Piece length approx. 49.2 yds.

| Art. / Réf. | Farben  | Coloris | Colours | B1 | M1 | BS | ↔ cm | ft/in | ☐ g/m <sup>2</sup> | oz/yd <sup>2</sup> |
|-------------|---------|---------|---------|----|----|----|------|-------|--------------------|--------------------|
| 1622 1110   | weiss   | blanc   | white   | •  |    |    | 1150 | 37'9" | 55                 | 1,62               |
| 1622 1120   | schwarz | noir    | black   | •  |    |    | 1150 | 37'9" | 55                 | 1,62               |



weiss / blanc / white



schwarz / noir / black

B1: Schwer entflammbar nach  
DIN 4102 B1 (Stand: 06/2005).

Auf Wunsch:  
Professionell konfektionierte  
Maßanfertigungen aus unseren  
Ateliers.

M1 : Classement au feu NF M1  
(Edition : 06/2005).

Sur demande :  
Confection sur mesure dans nos  
ateliers de couture.

BS: Flameproofed to BS 5867  
(Updated: 06/2005).

On request:  
Professional quality gauzes  
manufactured in our workshops.

**Gittertüll CS**

100 % Trevira CS.  
Permanent schwer entflammbar.  
Stückerlängen ca. 30 und 60 lfm.

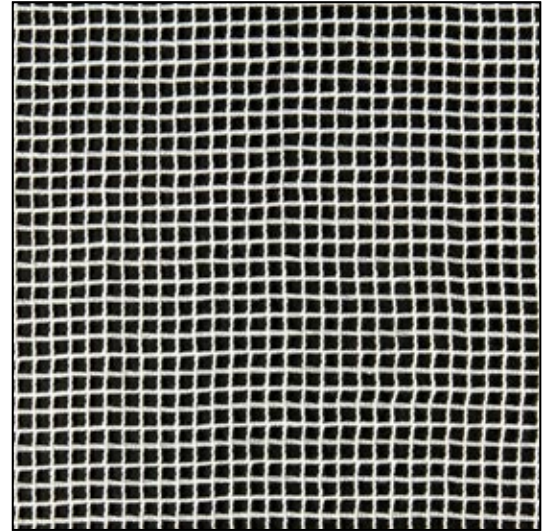
**Filet maille carrée CS**

100 % trévira CS.  
Longueur pièces env. 30 et 60 ml.

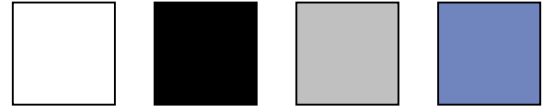
**Square gauze CS**

100 % trevira CS.  
Inherently flameproofed.  
Piece lengths ~32.8 and 65.5 yds.

| Art. / Réf. | Farben  | Coloris | Colours | B1 | M1 | BS | ↔ cm | ft/in | g/m <sup>2</sup> | oz/yd <sup>2</sup> |
|-------------|---------|---------|---------|----|----|----|------|-------|------------------|--------------------|
| 1623 5110   | weiss   | blanc   | white   | •  |    |    | 520  | 17'0" | 50               | 1,47               |
| 1623 5210   | schwarz | noir    | black   | •  |    |    | 520  | 17'0" | 50               | 1,47               |
| 1623 5310   | grau    | gris    | grey    | •  |    |    | 520  | 17'0" | 50               | 1,47               |
| 1623 5410   | blau    | bleu    | blue    | •  |    |    | 520  | 17'0" | 50               | 1,47               |



weiss / blanc / white

**MEGASTRETCH 150**

80 % Nylon, 20 % Spandex.  
Stückerlänge ca. 30 lfm.

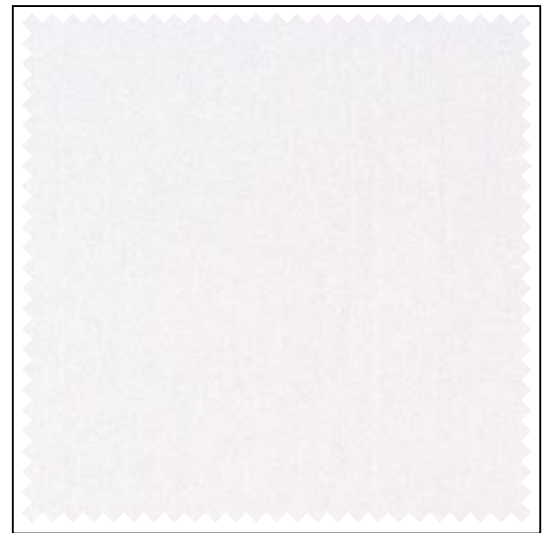
**MEGASTRETCH 150**

80 % nylon, 20 % spandex.  
Longueur pièces env. 30 ml.

**MEGASTRETCH 150**

80 % nylon, 20 % spandex.  
Piece length approx. 32.8 yds.

| Art. / Réf. | Farben  | Coloris | Colours | B1 | M1 | BS | ↔ cm | ft/in | g/m <sup>2</sup> | oz/yd <sup>2</sup> |
|-------------|---------|---------|---------|----|----|----|------|-------|------------------|--------------------|
| 1624 1303   | weiss   | blanc   | white   | •  |    |    | 150  | 59"   | 210              | 6,19               |
| 1624 1347   | schwarz | noir    | black   | •  |    |    | 150  | 59"   | 210              | 6,19               |
| 1624 1319   | silber  | argent  | silver  | •  |    |    | 150  | 59"   | 210              | 6,19               |



weiss / blanc / white

**MEGASTRETCH 450**

100 % Polyester.  
Stückerlänge ca. 30 lfm.

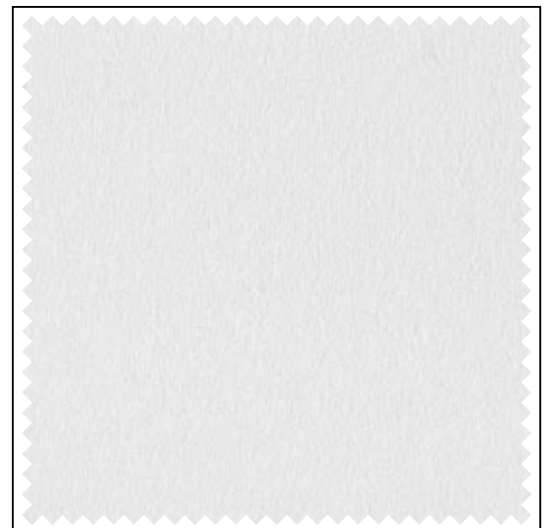
**MEGASTRETCH 450**

100 % polyester.  
Longueur pièces env. 30 ml.

**MEGASTRETCH 450**

100 % polyester.  
Piece length approx. 32.8 yds.

| Art. / Réf. | Farben  | Coloris | Colours | B1 | M1 | BS | ↔ cm | ft/in | g/m <sup>2</sup> | oz/yd <sup>2</sup> |
|-------------|---------|---------|---------|----|----|----|------|-------|------------------|--------------------|
| 1624 4303   | weiss   | blanc   | white   | •  |    |    | 450  | 14'9" | 95               | 2,80               |
| 1624 4347   | schwarz | noir    | black   | •  |    |    | 450  | 14'9" | 95               | 2,80               |
| 1624 4319   | silber  | argent  | silver  | •  |    |    | 450  | 14'9" | 95               | 2,80               |



weiss / blanc / white

Gerriets GmbH  
Im Kirchenhürstle 5-7  
D-79224 Umkirch  
☎ +49 7665 960-0  
☎ +49 7665 960-125  
info@gerriets.com

Beratung  
für Projekte und Technik  
☎ +49 7665 960-522  
☎ +49 7665 960-525  
info@gerriets.com

Gerriets S. A. R. L.  
Rue du Pourquoi Pas  
F-68600 Volgelsheim  
☎ +33 3 89 22 70 22  
☎ +33 3 89 22 70 50  
gerriets@gerriets.com

Gerriets International Inc.  
130 Winterwood Avenue  
Ewing NJ 08638, USA  
☎ +1 609 758-9121  
☎ +1 609 758-9596  
mail@gi-info.com

Gerriets Great Britain Ltd.  
18 Verney Road  
London SE16 3DH, UK  
☎ +44 20 7639 7704  
☎ +44 20 7732 5760  
general@gerriets.co.uk

Gerriets Handel GmbH  
Gorskistraße 8  
A-1230 Wien  
☎ +43 1 6000 600-0  
☎ +43 1 6032 585  
verkauf@gerriets.at

Gerriets España S. L.  
Enrique Velasco, 40  
E-28038 Madrid  
☎ +34 91 3339 191  
☎ +34 91 3339 192  
gerriets@gerriets-spain.com

Gerriets Italia  
Risam for show  
Viale Spagna 150 / B  
I-20093 Cologno Monzese (MI)  
☎ +39 02 2532 113  
☎ +39 02 2532 130  
info@risamforshow.com

Gerriets Greece  
Division of Enttech S.A.  
50, Ioulianou Str  
GR-104 34 Athens  
☎ +30 210 8257 070  
☎ +30 210 8257 072  
info@enttech.gr

Gerriets Benelux  
Division of Blue Squares  
Rue du Travail, 5  
B-1400 Nivelles  
☎ +32 67 895 006  
☎ +32 67 895 016  
info@gerriets.be

Gerriets Benelux  
Division of Blue Squares  
DCD Nederland BV  
Flevolaan 22  
NL-1382 JZ Weesp  
☎ +31 294 458 931  
☎ +31 294 458 946  
info@gerriets.nl

